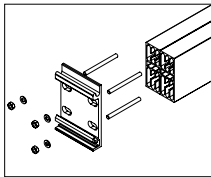


# KE ANTALIA B35

per aumenti TESSUTO e RAL vedi pagine 106/115 - For fabric and RAL increases see at pages 106/115  
 Augmentation TISSU et RAL voir pages 106/115 - Für Aufpreise für RAL und Stoffe S. seiten 106/115



**!** Tessuto saldato di serie (eccetto Liberty, Panama, Resinati) - Fabric welded as standard (except Liberty - Panama - waterproof fabrics)  
 Toile soudée (sauf Liberty, Panama, Imperméables) - Stoff serienmäßig geschweißt (außer Liberty - Panama - wasserdichte Stoffe)

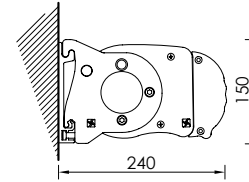
Ingombri minimi della tenda finita - 1 coppia bracci  
 Minimum awning encumbrances - 1 pair arms  
 Encombrentes minimum du store fini - 1 pair bras  
 Minimaler Ausmaß der fertigen Markise - 1 Paar Arme

cm	↔
↻	2 BRACCI
160	191
185	216
210	241
235	266
260	291
310	341

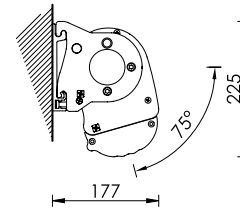
**POLIESTERE  
 POLYESTER**  
 solo + 4%  
 only + 4%



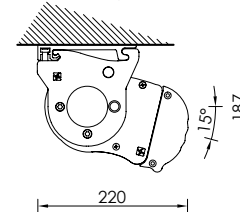
Installazione a parete  
 Wall installation



Installazione a parete 75°  
 Wall installation 75°



Installazione a soffitto 15°  
 Ceiling installation 15°



Installazione a soffitto 90°  
 Ceiling installation 90°

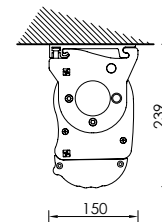


Diagramma di copertura a parete - Wall covering diagram

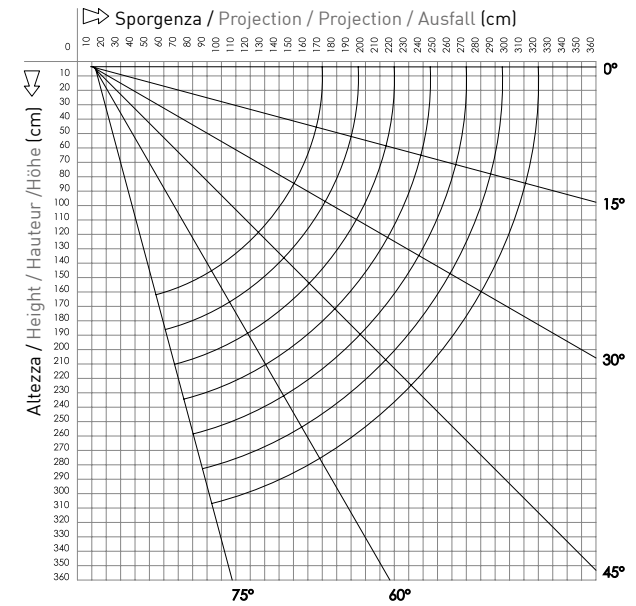


Diagramma di copertura a soffitto - Ceiling covering diagram

